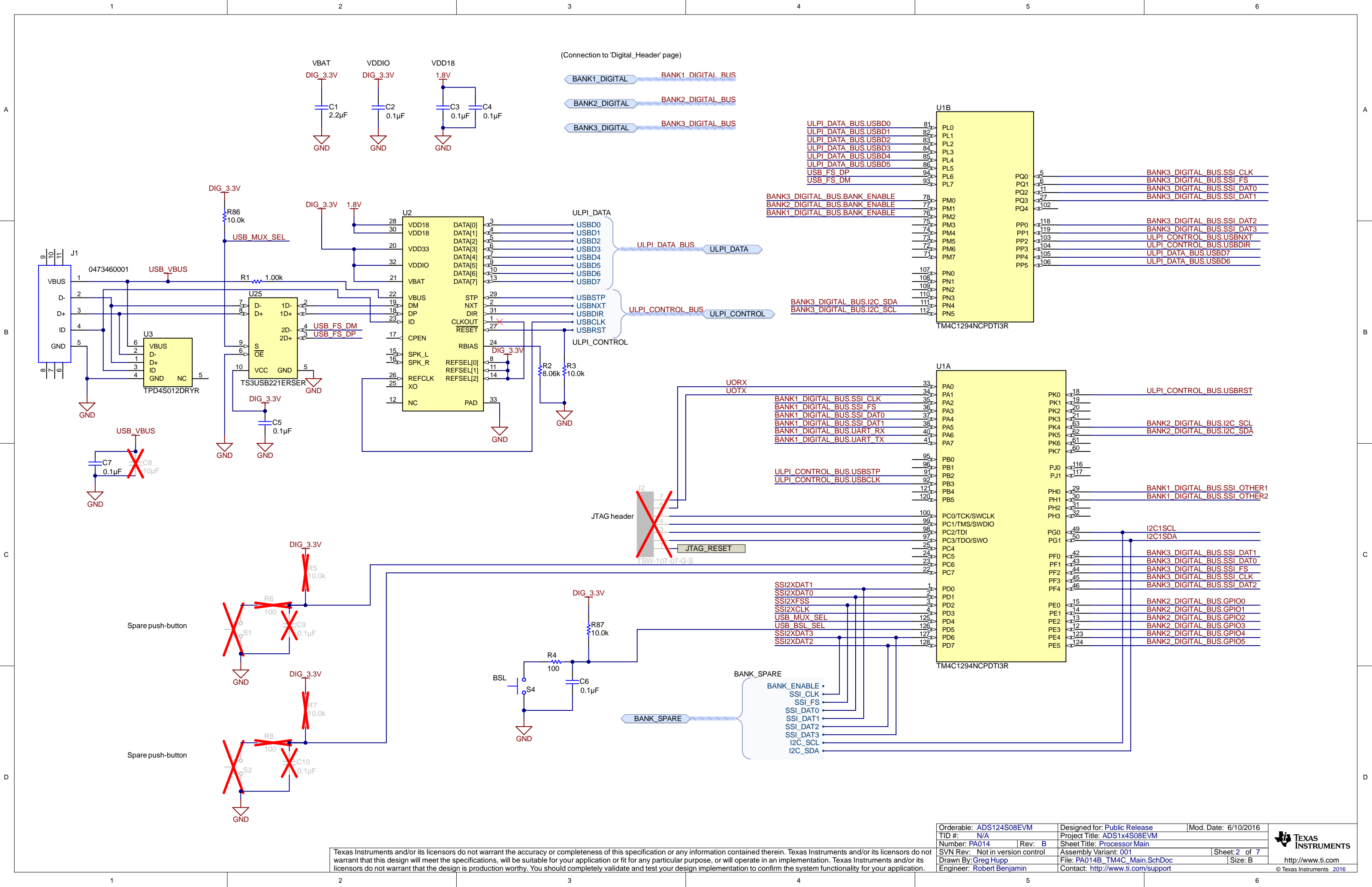


Texas Instruments and/or its licensors do not warrant the accuracy or completeness of this specification or any information contained therein. Texas Instruments and/or its licensors do not warrant that this design will meet the specifications, will be suitable for your application or fit for any particular purpose, or will operate in an implementation. Texas Instruments and/or its licensors do not warrant that the design is production worthy. You should completely validate and test your design implementation to confirm the system functionality for your application.

Orderable: ADS124S08EVM	Designed for: Public Release	Mod. Date: 3/21/2017
TID #: N/A	Project Title: ADS1x4S08EVM	
Number: PA014	Rev: B	Sheet Title: ADS1x4S08 Input
SVN Rev: Not in version control	Assembly Variant: 001	Sheet: 1 of 7
Drawn By: Robert Benjamin	File: PA014B_ADC.SchDoc	Size: B
Engineer: Robert Benjamin	Contact: http://www.ti.com/support	



Texas Instruments and/or its licensors do not warrant the accuracy or completeness of this specification or any information contained therein. Texas Instruments and/or its licensors do not warrant that this design will meet the specifications, will be suitable for your application or fit for any particular purpose, or will operate in an implementation. Texas Instruments and/or its licensors do not warrant that the design is production worthy. You should completely validate and test your design implementation to confirm the system functionality for your application.

Orderable: ADS124S08EVM	Designed for: Public Release	Mod. Date: 6/10/2016
TID #: N/A	Project Title: ADS1x4S08EVM	
Number: PA014	Rev: B	Sheet Title: Processor Main
SVN Rev: Not in version control	Assembly Variant: 001	Sheet: 2 of 7
Drawn By: Greg Hupp	File: PA014B_TM4C_Main.SchDoc	Size: B
Engineer: Robert Benjamin	Contact: http://www.ti.com/support	

A

A

B

B

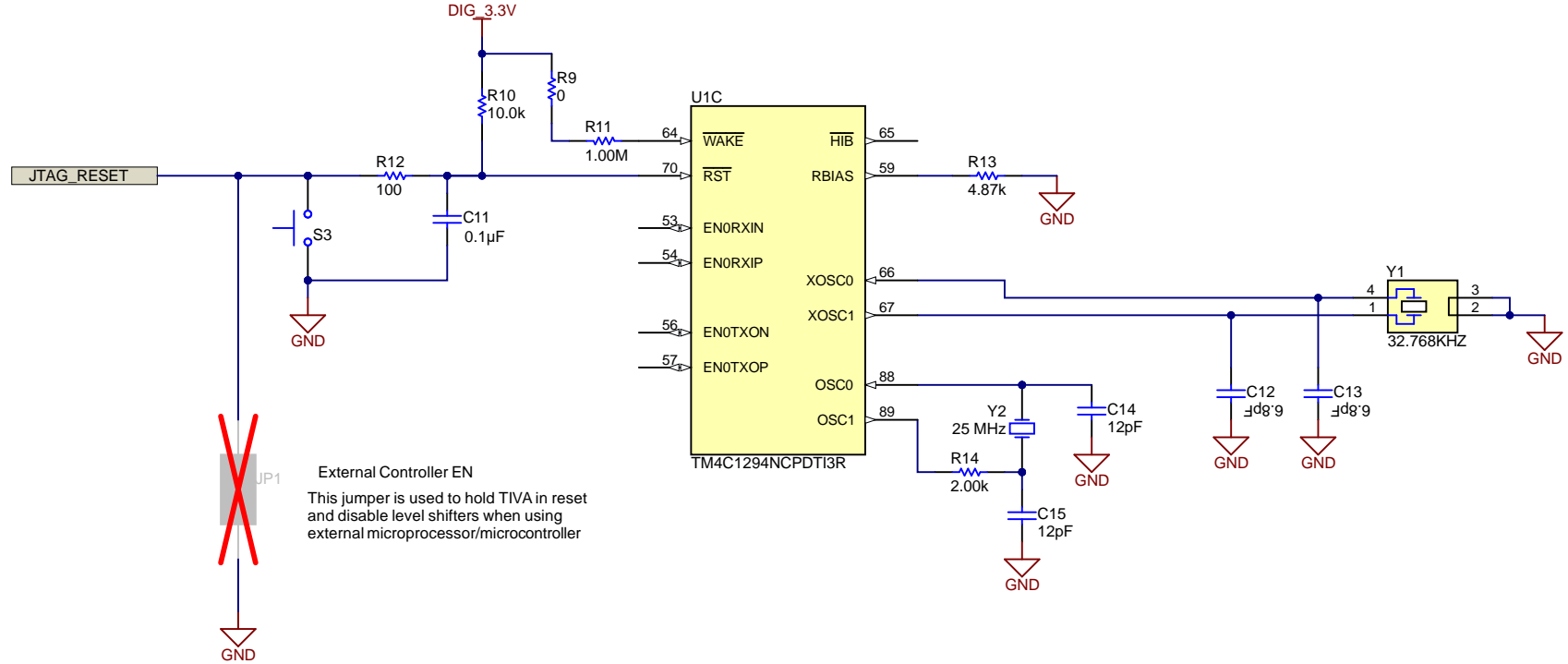
C

C

D

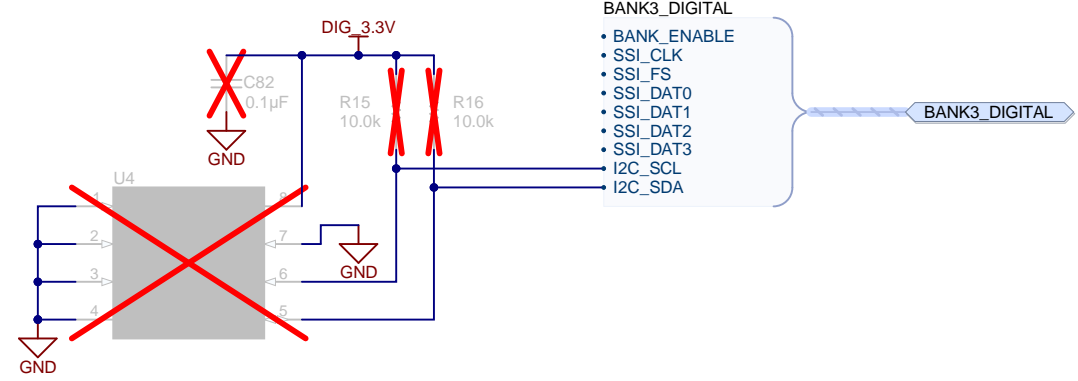
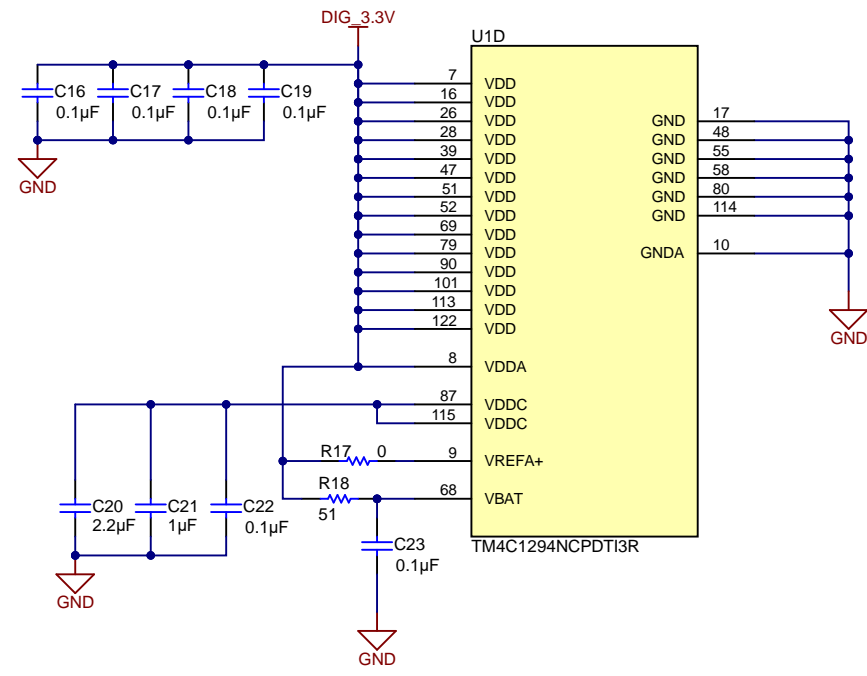
D

TIVA Misc



External Controller EN
This jumper is used to hold TIVA in reset and disable level shifters when using external microprocessor/microcontroller

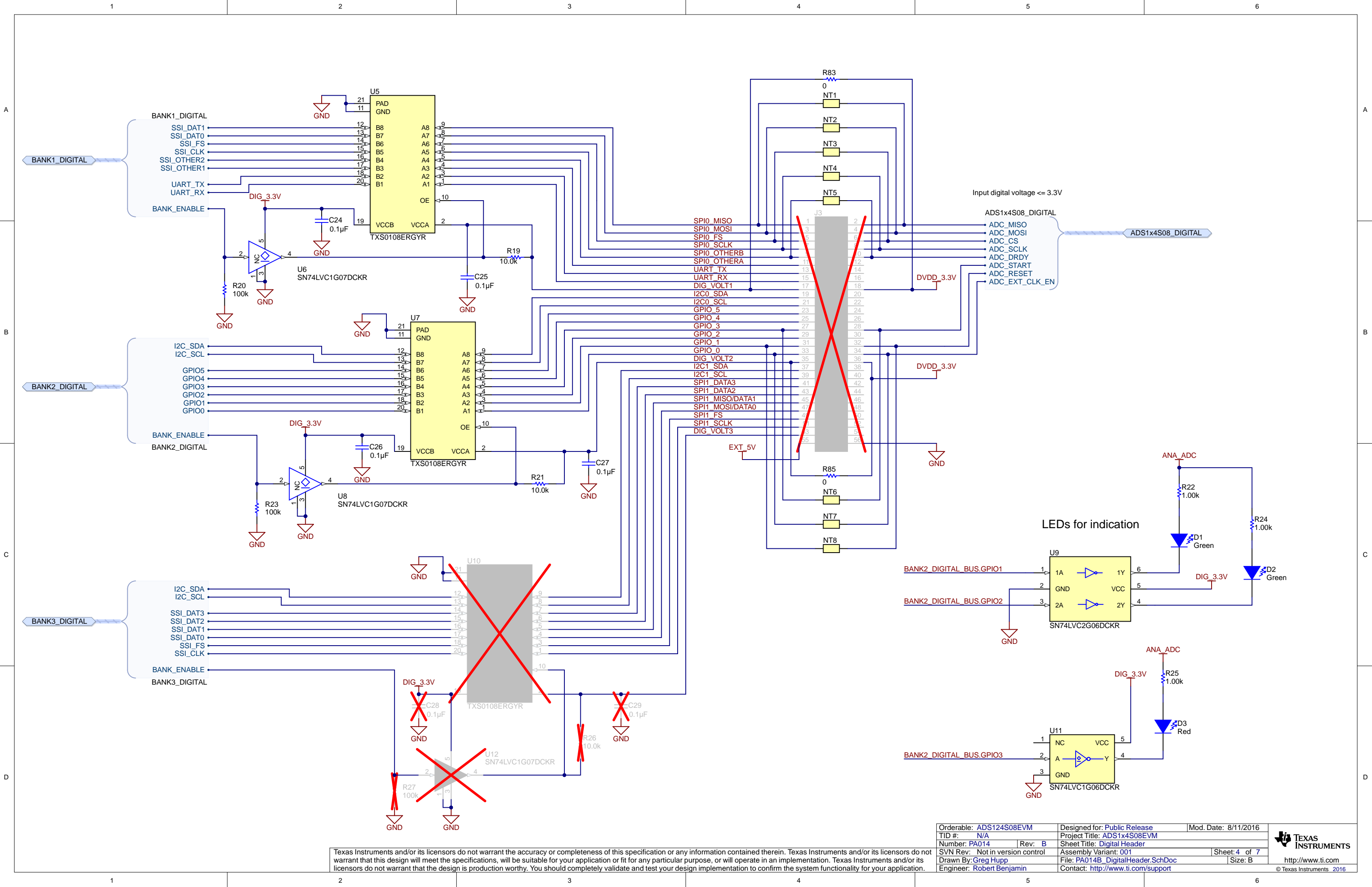
TIVA Power



- BANK3_DIGITAL
- BANK_ENABLE
 - SSI_CLK
 - SSI_FS
 - SSI_DAT0
 - SSI_DAT1
 - SSI_DAT2
 - SSI_DAT3
 - I2C_SCL
 - I2C_SDA

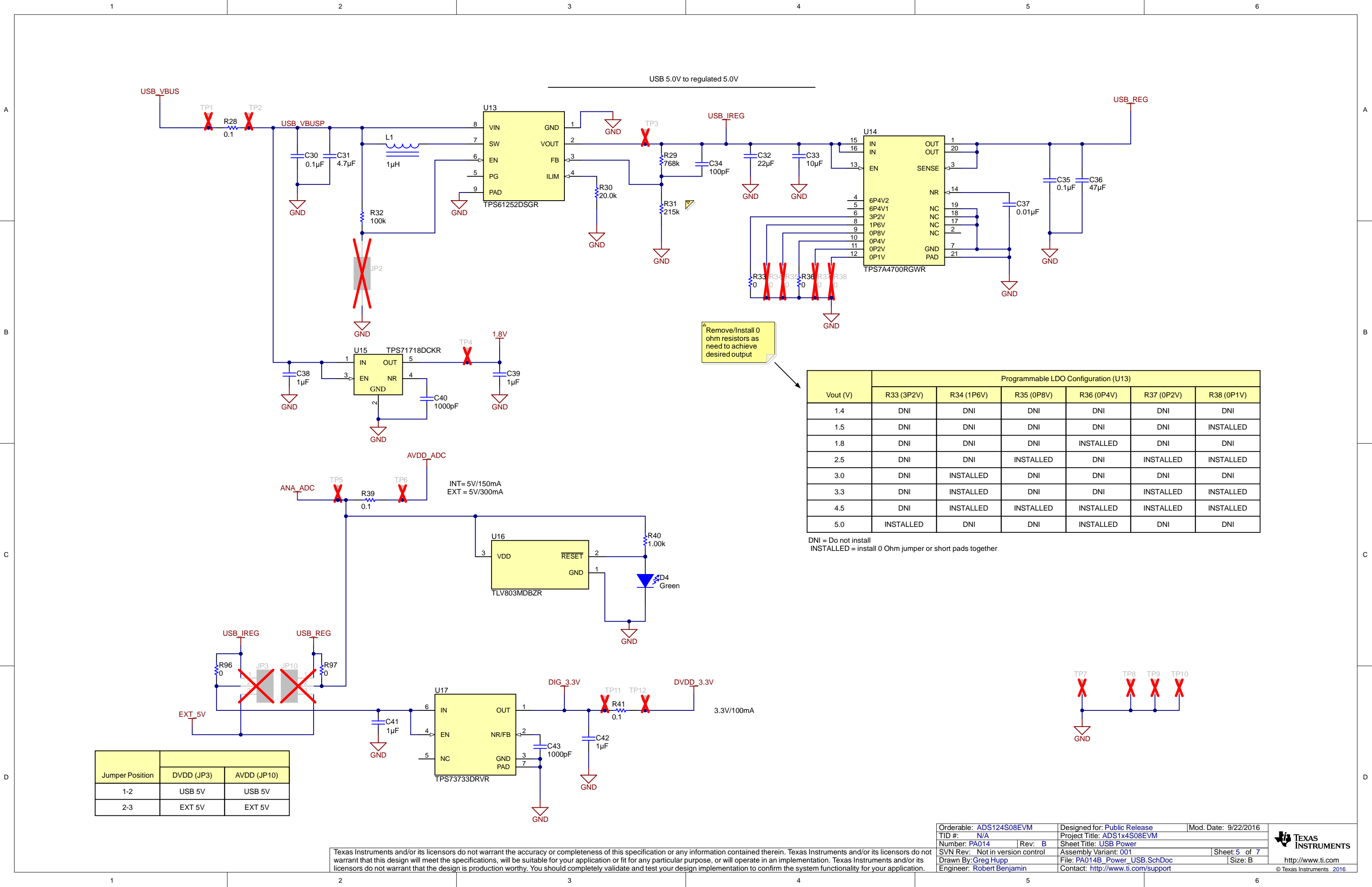
BANK3_DIGITAL

Texas Instruments and/or its licensors do not warrant the accuracy or completeness of this specification or any information contained therein. Texas Instruments and/or its licensors do not warrant that this design will meet the specifications, will be suitable for your application or fit for any particular purpose, or will operate in an implementation. Texas Instruments and/or its licensors do not warrant that the design is production worthy. You should completely validate and test your design implementation to confirm the system functionality for your application.



Texas Instruments and/or its licensors do not warrant the accuracy or completeness of this specification or any information contained therein. Texas Instruments and/or its licensors do not warrant that this design will meet the specifications, will be suitable for your application or fit for any particular purpose, or will operate in an implementation. Texas Instruments and/or its licensors do not warrant that the design is production worthy. You should completely validate and test your design implementation to confirm the system functionality for your application.

Orderable: ADS124S08EVM	Designed for: Public Release	Mod. Date: 8/11/2016
TID #: N/A	Project Title: ADS1x4S08EVM	
Number: PA014	Rev: B	Sheet Title: Digital Header
SVN Rev: Not in version control	Assembly Variant: 001	Sheet: 4 of 7
Drawn By: Greg Hupp	File: PA014B_DigitalHeader.SchDoc	Size: B
Engineer: Robert Benjamin	Contact: http://www.ti.com/support	



Jumper Position	DVDD (JP3)	AVDD (JP10)
1-2	USB 5V	USB 5V
2-3	EXT 5V	EXT 5V

Vout (V)	Programmable LDO Configuration (U13)					
	R33 (3P2V)	R34 (1P6V)	R35 (0P8V)	R36 (0P4V)	R37 (0P2V)	R38 (0P1V)
1.4	DNI	DNI	DNI	DNI	DNI	DNI
1.5	DNI	DNI	DNI	DNI	DNI	INSTALLED
1.8	DNI	DNI	DNI	INSTALLED	DNI	DNI
2.5	DNI	DNI	INSTALLED	DNI	INSTALLED	INSTALLED
3.0	DNI	INSTALLED	DNI	DNI	DNI	DNI
3.3	DNI	INSTALLED	DNI	DNI	INSTALLED	INSTALLED
4.5	DNI	INSTALLED	INSTALLED	INSTALLED	INSTALLED	INSTALLED
5.0	INSTALLED	DNI	DNI	INSTALLED	DNI	DNI

DNI = Do not install
INSTALLED = install 0 Ohm jumper or short pads together

Texas Instruments and/or its licensors do not warrant the accuracy or completeness of this specification or any information contained therein. Texas Instruments and/or its licensors do not warrant that this design will meet the specifications, will be suitable for your application or fit for any particular purpose, or will operate in an implementation. Texas Instruments and/or its licensors do not warrant that the design is production worthy. You should completely validate and test your design implementation to confirm the system functionality for your application.

Orderable: ADS124S08EVM	Designed for: Public Release	Mod. Date: 9/22/2016
TID #: N/A	Project Title: ADS1x4S08EVM	
Number: PA014	Rev: B	Sheet Title: USB Power
SVN Rev: Not in version control	Assembly Variant: 001	Sheet: 5 of 7
Drawn By: Greg Hupp	File: PA014B_Power_USB.SchDoc	Size: B
Engineer: Robert Benjamin	Contact: http://www.ti.com/support	

A

B

C

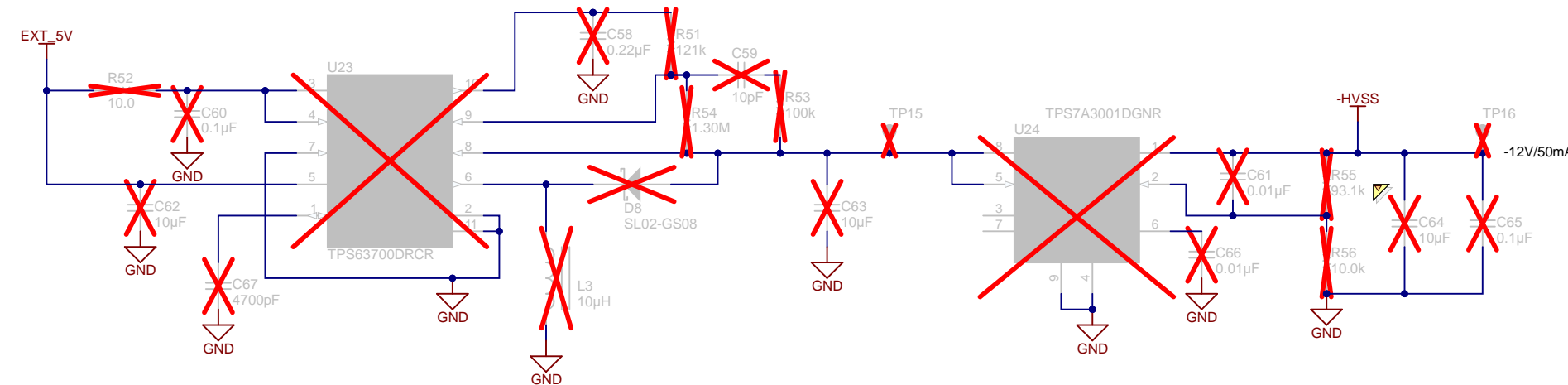
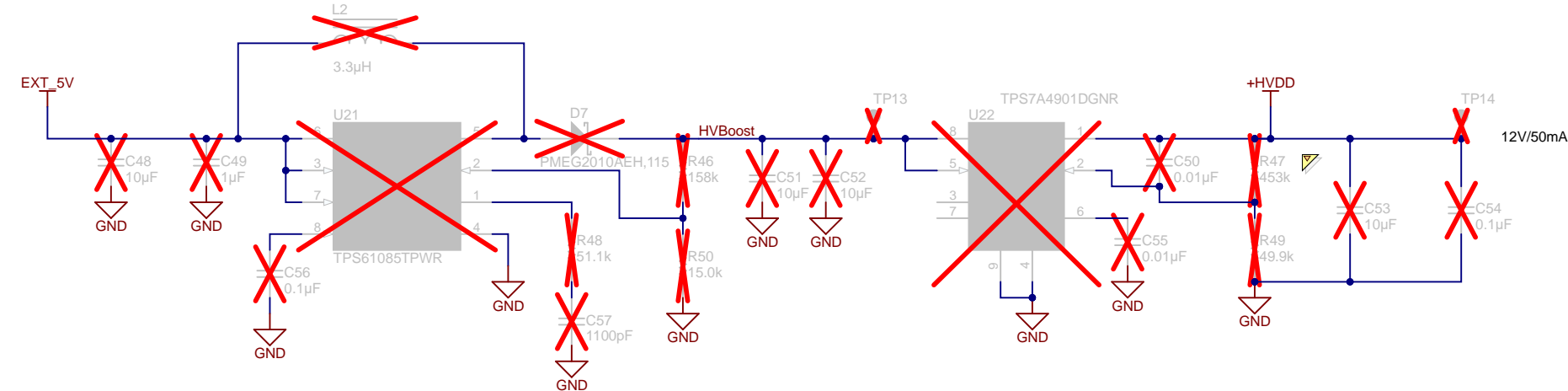
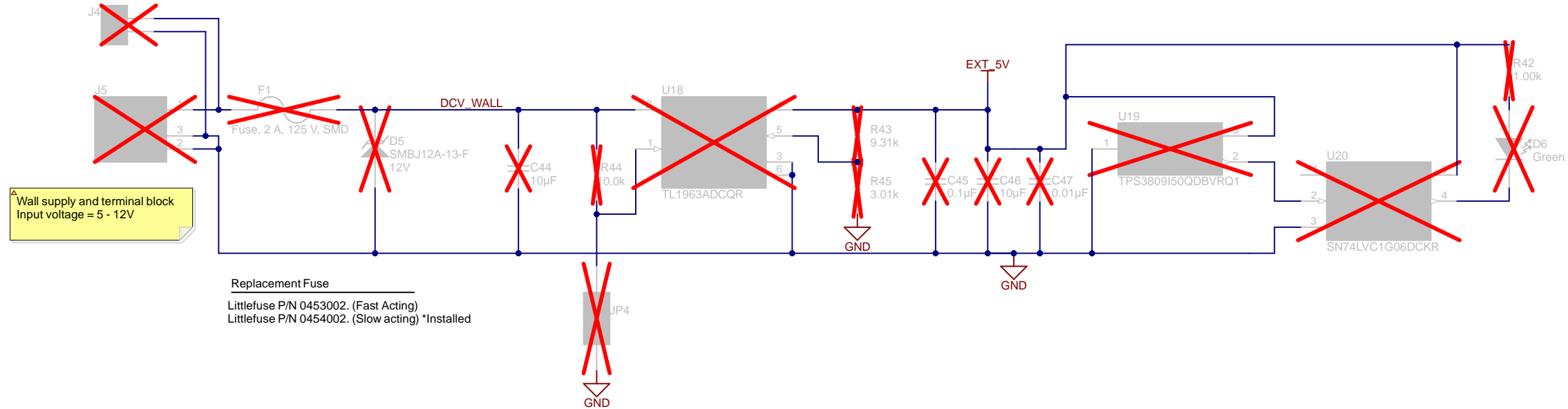
D

A

B

C

D



Texas Instruments and/or its licensors do not warrant the accuracy or completeness of this specification or any information contained therein. Texas Instruments and/or its licensors do not warrant that this design will meet the specifications, will be suitable for your application or fit for any particular purpose, or will operate in an implementation. Texas Instruments and/or its licensors do not warrant that the design is production worthy. You should completely validate and test your design implementation to confirm the system functionality for your application.

Orderable: ADS124S08EVM	Designed for: Public Release	Mod. Date: 3/18/2017
TID #: N/A	Project Title: ADS1x4S08EVM	
Number: PA014	Rev: B	Sheet Title: External Power
SVN Rev: Not in version control	Assembly Variant: 001	Sheet: 6 of 7
Drawn By: Greg Hupp	File: PA014B_Power_External.SchDoc	Size: B
Engineer: Robert Benjamin	Contact: http://www.ti.com/support	

TEXAS
INSTRUMENTS

<http://www.ti.com>

© Texas Instruments 2016

